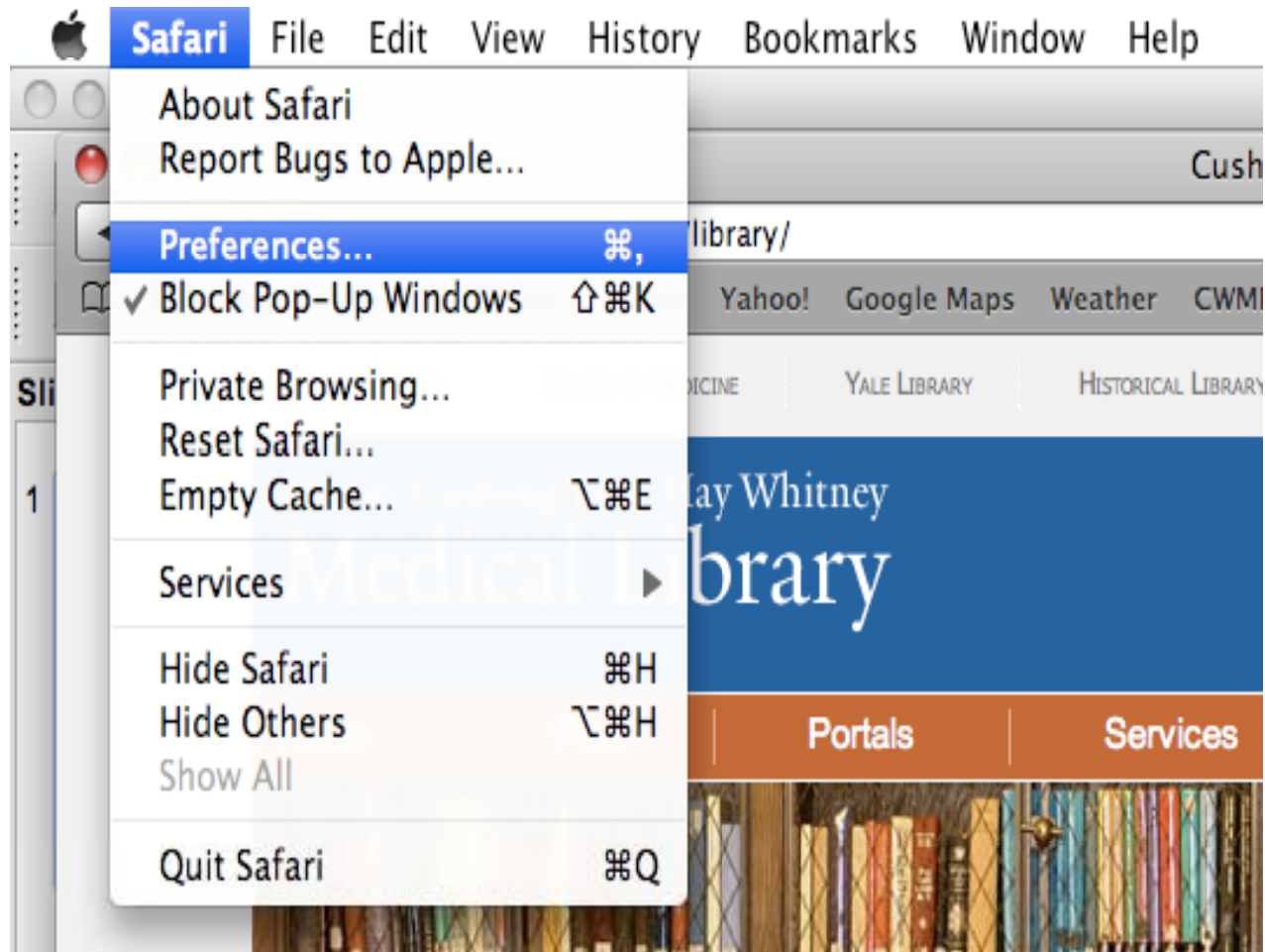


Configuring and Using Yale's Medical Library Proxy Server

- A connection through the proxy server allows you to access Yale Library resources from off-campus locations.
- Do not configure your Web browser until you have applied for and received a proxy account username and password
- Don't use the proxy connection for all Web browsing (i.e. when you aren't using Yale resources). Turn off the proxy when you don't need it or consider setting one browser to use the proxy and leave another "unproxied"

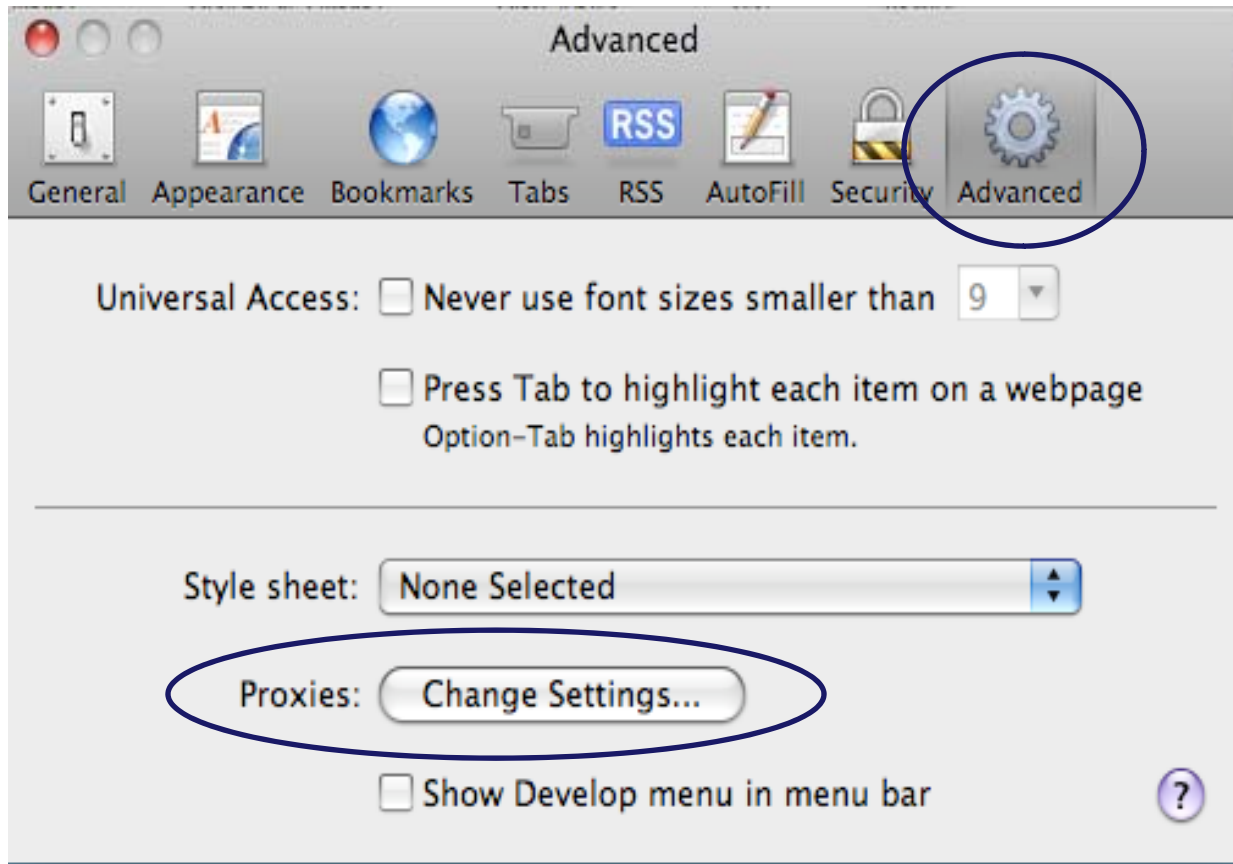
Configuring Safari for Mac

Instructions based on version 4.0.4

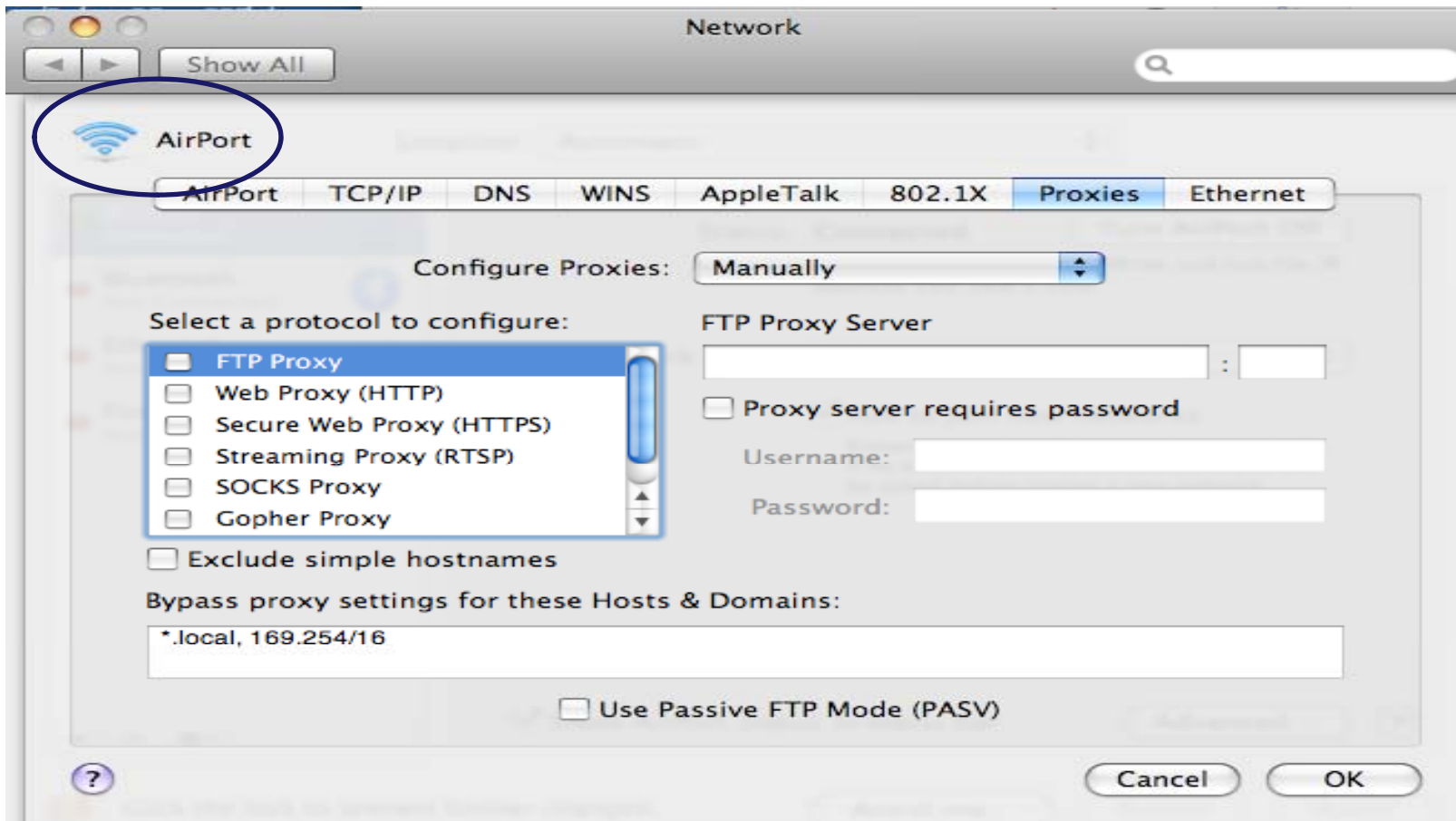


From the dropdown “Safari” menu, select “Preferences”

Configuring the Proxy

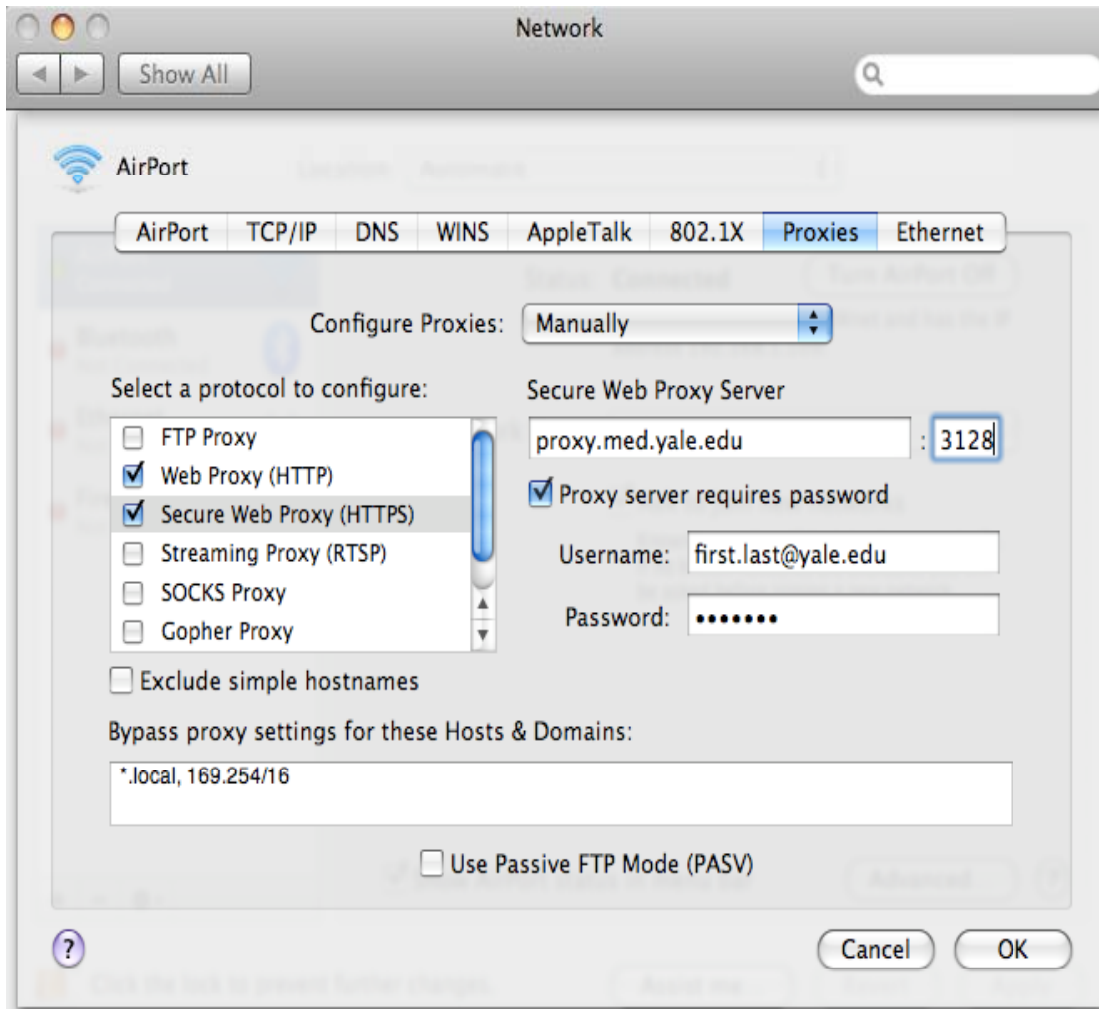


Under “Advanced” Options
click on “Proxies:”
Change Settings



The Safari browser uses native Mac OS system preferences. Note that the network preferences are specific to each method of connecting to the Internet. This screen will set the proxy on for the Airport connection.

Entering the Proxy Server Info



Check the box next to “Web Proxy (HTTP)” and enter the proxy server name and port number

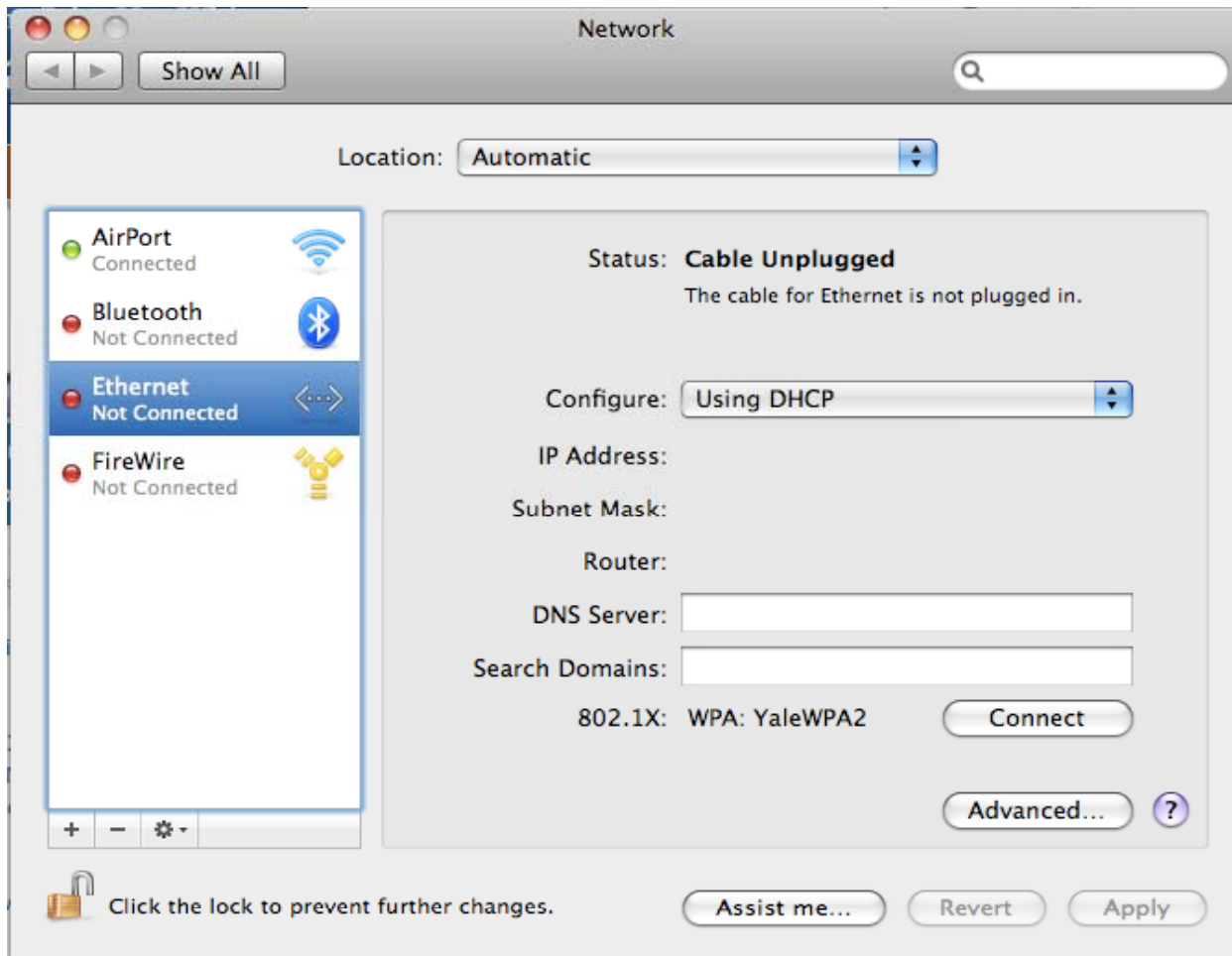
- **proxy.med.yale.edu 3128** –
in the appropriate boxes

Then do the same for “Secure Web Proxy (HTTPS)”

Check the box for “Proxy server requires password” and enter your username/password in the appropriate boxes.

The next website you go to after configuring the proxy server will require you to login using your proxy server username (full email address) and the password assigned to you

Configuring other connection methods



If you use more than one method to connect to the Internet - both wired Ethernet and wireless Airport, you will need to configure the proxy on both methods